



Diamond Software

Newsletter

November 2013

In This Issue

[Enhanced Voucher Selection](#)

[2013 Year-End Updates](#)

[Validate GL Account Setup](#)

[New! SmartList Designer](#)

[GP 2013 New Feature for GL](#)

[Payroll Integration to
Payables](#)



**Have you missed
any of our
newsletters?**

[Click here to access
archived newsletters.](#)



**Enhanced
Voucher
Selection**



Use Smartlists to Validate GL Account Setup Before Fiscal Year Close

Here's a [link](#) to a great web article that explains how to use GP Smartlists to make sure your GL accounts are set up correctly and will close properly during the year-end process.

We'll be happy to answer your questions about setting up these Smartlists, so please give us a call or send an email to candaceh@diamond-soft.com.

Expect more information in our December newsletter as well as a special email to help you plan your fiscal year close.

With Enhanced Voucher Selection from Blue Moon, you can streamline your AP voucher selection process while viewing the information you need to make informed payment decisions.

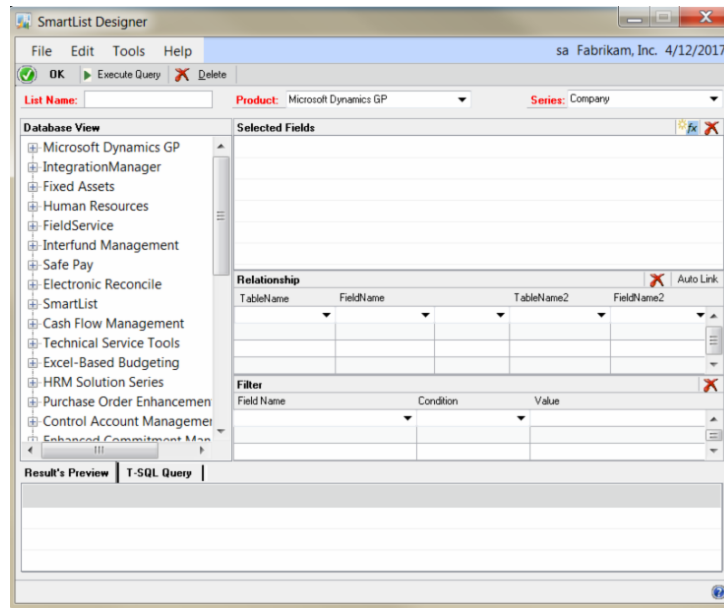
Features include:

- The ability to select and edit all open AP vouchers for all vendors or a filtered list from a single window
- Multiple sorting/filtering options
- Check stub inquiry capability added to allow re-print of check stub with apply information

Save time and effort with the ability to easily mark AP vouchers for payment.

Watch this [YouTube video](#) to learn more.

Please contact [Dwight Boudreaux](#) for more information.



SmartList Designer: New Tool Added to GP 2013

SmartList Designer is a new free tool for GP 2013 that allows you to create queries based on table definitions found in Microsoft Dynamics GP and any third party application. You can create a new SmartList or create a new SmartList based on an existing SmartList. You also can modify the SmartList that you created using SmartList Designer. The tool was recently released in service pack 2 for GP 2013.

Here's a [link to a recent Dynamics GP Blogster](#) article that has lots more information about this new tool.



New Features in GP 2013 General Ledger

Payroll Year-End Updates Released

2013 Year-end updates are available now. Click on the link below for your version of GP, and please give us a call if you have any questions or need help with the installation.

[Dynamics GP 2010](#)

[Dynamics GP 2013](#)

Watch this [YouTube video](#) to find out about the new GL features available in GP 2013 which include new year-end close options, journal entry inquiry for prior years, reconciliation features for inventory and bank account matching to the general ledger, and more.

The screenshot shows the 'Payroll Vendor Setup' window. The 'Transaction Type' is 'Company Deduction'. The 'Employee' field is empty. The 'Deduction Code' is '401K' and the 'Description' is '401(k) Deduction'. The 'Vendor' is 'ASSOCIAT0001' and the 'Vendor Name' is 'Associated Insurance Inc.'. The 'Voucher Description' is 'Ded Code+Ck Date'.

Simplify Payroll Liabilities Payments

Dynamics GP's [Payroll Integration to Payables \(PIP\)](#) saves time by automatically creating purchasing transactions for payroll liabilities (such as taxes and garnishments) each time you do payroll, and it's simple to set up.

Click [here](#) to read a great article by Christina Phillips that will give you complete setup instructions. Please call us if you have any questions about PIP.