

In This Issue

[FREE Salespad Boost Will Save You Time](#)

[Tips for Covid-19 Paid Leave Tracking](#)

[How to Set Up SOP Quick Print](#)

[Quick Way to Display Cash Balances](#)



FREE SALESPAD BOOST GIVES EASY ACCESS TO DATA

FREE - yes **FREE** software to enhance your Dynamics GP and allow you more power to quickly search for customers, review their sales documents, and review the items they have purchased in the past. **FREE** SalesPad Boost software can help make your day-to-day operations just a bit easier.



[Click here for easy to read example..](#)

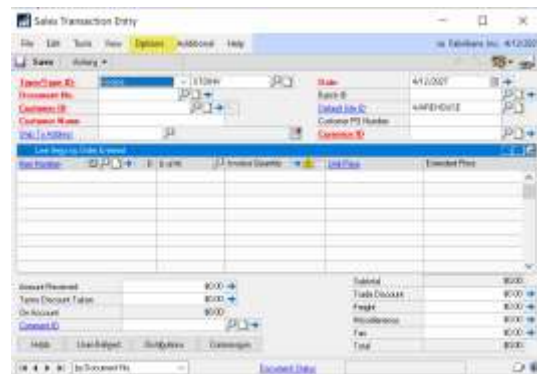
[Click here to learn more and to download the FREE software.](#)

HOW TO SAVE AND PRINT SOP DOCUMENTS IN JUST ONE STEP

Use CTRL+Q to save and print sales orders, fulfillment orders, or invoice documents along with packing slips and picking tickets in one step.

Just set it up with the **Keep Current Document Displayed** option unchecked. Then instead of saving and then printing just use **Ctrl-Q** to quick print.

To access the setup window, click on the Options menu on the Sales Transaction Entry screen, then select Quick Print Setup. You can configure additional options for packing slips and picking tickets, along with report output settings. You can also choose to let the document remain on the screen even after printed.



[zoom...](#)

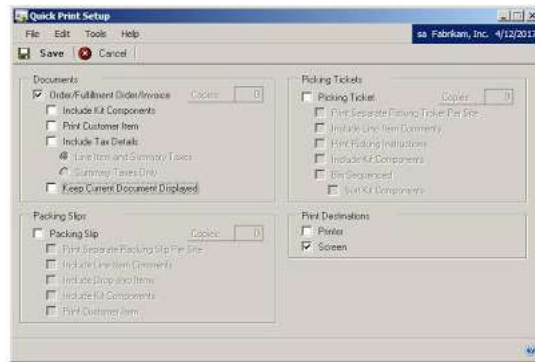
INFORMATION ABOUT SETTING UP COVID-19 PAID LEAVE

We want to keep you up-to-date so that you can be prepared for Covid-19 paid leave tracking requirements. There are no planned tax table changes, and you will be able to use existing GP tools to track Covid-19 paid leave.

Microsoft has provided us with very helpful information, so click on the link below to access the article recently published by Terry Heley.

[Tips to setup Coronavirus \(COVID\) paid leave in Microsoft Dynamics GP](#)

We want to remind you that we are available to help you get through these challenging times. If you need assistance of any kind to keep your systems up and running, please be sure to let us know how we can help.



[zoom...](#)

HOW TO SPEED UP CASH BALANCE INQUIRY

Use the Microsoft Dynamics GP Checkbook Balance Inquiry window to check cash balances and make reconciling bank accounts easier. To speed up the inquiry time, **enter the date range before you choose the Checkbook ID.**

If the Checkbook ID is entered first, data begins populating immediately. If there are lots of transactions, you might end up waiting quite a while before having the opportunity to enter the date range.